

DISCLAIMER: The Block Design Collective ("BDC") does not make any representations or warranties with respect to the accuracy or suitability of this information, and persons making use of this information do so at their own risk. BDC disclaims liability for damages of any kind, including any special, indirect, or consequential damages, which may result from use of this information. This information is not to be interpreted as indicating compliance with, or waiver of, any applicable building code, ordinance, standard or law.

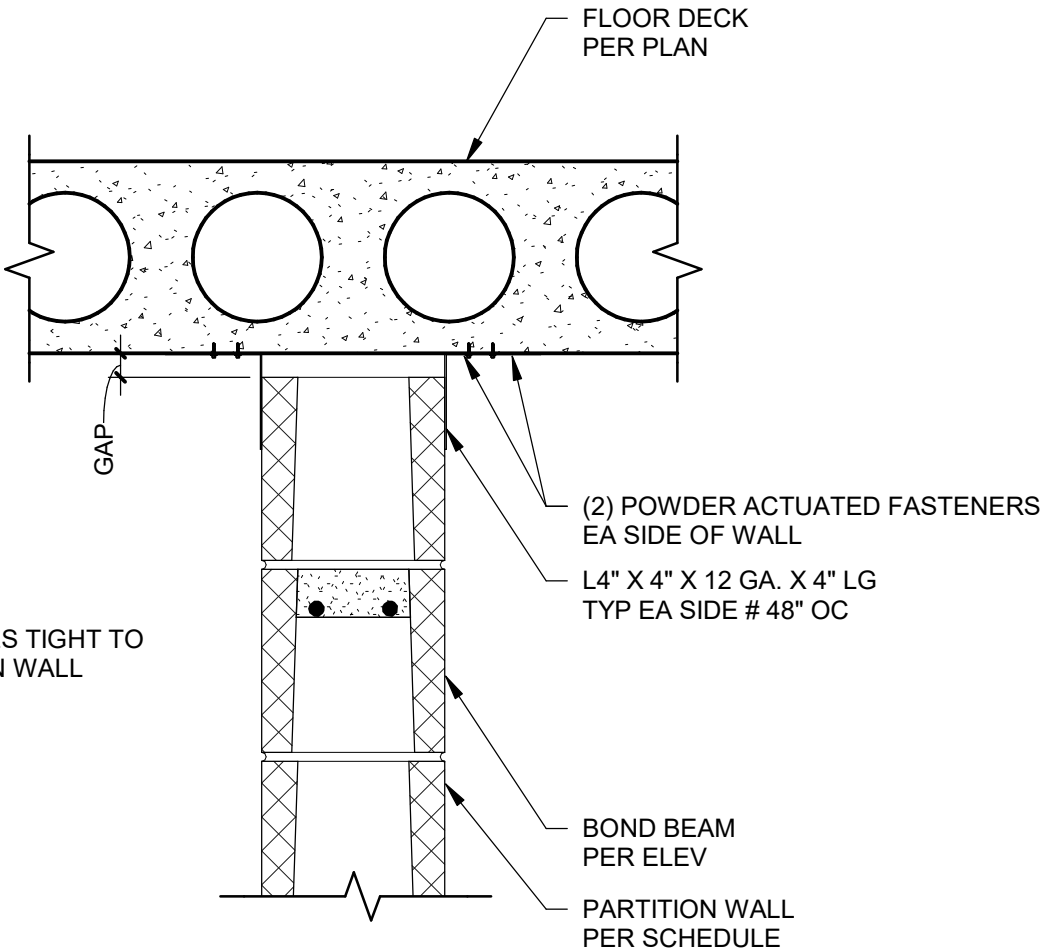
**DESIGNER NOTES:**

DESIGN REQUIREMENTS

1. IF PARTITION WALL IS FIRE-RATED, THEN THE GAP MUST BE FILLED WITH A FIRE RETARDANT MATERIAL, SUCH AS MINERAL WOOL.
2. A PARTITION WALL IS NON-PARTICIPATING AND SO NO POSITIVE CONNECTION IS PERMITTED BETWEEN THE DIAPHRAGM AND THE MASONRY PARTITION WALL.
3. IT IS RECOMMENDED TO LOCATE THE BOND BEAM DOWN ONE COURSE TO ALLOW FOR PROPER GROUTING PROCEDURES.
4. GAP MUST BE VERIFIED WITH EXPECTED BUILDING MOVEMENTS.
5. VERIFY HOLLOW CORE STRAND LOCATION AND DEPTH TO ENSURE THAT POWDER ACTUATED FASTENERS DO NOT DAMAGE STRANDS OR IMPACT HOLLOW CORE SLAB CAPACITY.

NOTE:

INSTALL ANGLES TIGHT TO  
CMU PARTITION WALL



5

**TYPICAL PARTITION WALL**

SCALE: 1 1/2" = 1'-0"